



# Positioner FIMS

· / ( )

HART Protocol      Fieldbus

Positioner

( , , )

(2) Positioner

, 가

Model	Manufacturer	Protocol
FIELDVUE DVC	Fisher-Rosemount	HART, Fieldbus
SIPART PS2	SIEMENS	HART, Profibus
TZID, TZID-C	ABB	HART, Fieldbus, Profibus
Intelli-Pulse	DeZurik	HART
SRD991	Foxboro	HART, Fieldbus, Profibus
SVI	Masoneilan	HART
SVP3000	Yamatake	HART, Fieldbus

가

가

FIMS(Field Instrument Management System)

가

Positioner

(1) FIMS

FIMS( )

FIMS      Data      On-line

Database

Positioner

Tool

(1) Positioner

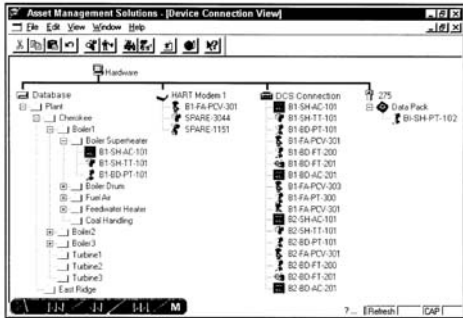
(2) FIMS

Positioner

FIMS

# Positioner FIMS

(Preventative Maintenance) (가)  
 (Predictive Maintenance) (Smart/Digital) (가)  
 (Remot Calibration), (Self Diagnostic), (가)  
 Positioner (가)  
 Positioner가 (HART, Fieldbus Profibus) (가)  
 FIMS Positioner (가)



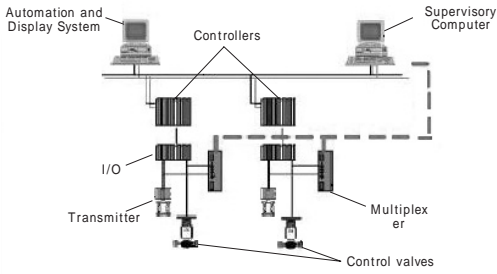
Software	Manufacturer
Asset Management System(AMS)	Fisher-Rosemount
Simatic PDM	SIEMENS
Smart Vision	ABB
IBIS	Hartmann & Braun
Instrument Management System(IMS)	DeZurik
ValVue	Masoneilan



(3) FIMS

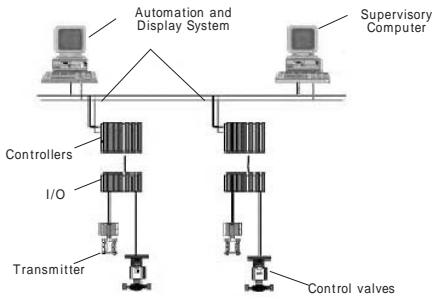
1. FIMS Interface

1. FIMS (가) DCS I/O MUX  
 (4) FIMS (가) DCS I/O Monitoring System (가)  
 FIMS



2. I/O 가

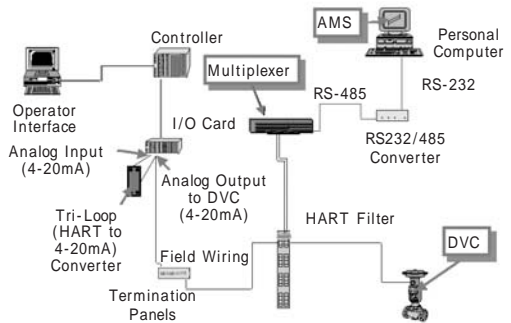
( ) HART DCS I/O Module  
 DCS HART I/O Module  
 HART I/O Module



3. HART DCS I/O Module  
 Positioner FIMS

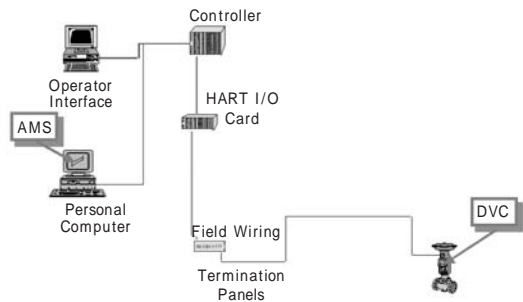
(1) T  
 T MUX DCS FIMS  
 FIMS  
 PC FIMS Fisher-Rosemount AMS  
 Positioner Fisher-Rosemount  
 DVC 5000 ABB TZID-

C 가  
 Analog Position Feedback  
 Fisher-Rosemount DVC 5000 Tri-Loop(HART to Analog Converter) MUX  
 DCS , ABB  
 TZID-C Analog Module Positioner  
 DCS



4. T FIMS

(2) Y  
 Y T  
 Field Device DCS HART Analog Input  
 HART Analog Output Module  
 DCS Network Controller  
 FIMS Fisher-Rosemount AMS  
 Positioner Fisher-



5. Y FIMS

# Positioner FIMS

Rosemount DVC 6000  
 Position Feedback Converter  
 Analog Module HART  
 Position Data T Y  
 가 FIMS , FIMS 가  
 Configuration, Loop Test, Data Positioner 가 On-  
 Calibration Configuration line Data 가

